



SOUTHERN
WISCONSIN
CHAPTER



Inside This Issue

- 1 - Lunch Meeting
- 3 - President's Message
- 4 - New Member Recruitment
- 4 - Board Minutes
- 5 - Chapter Member Obituary
- 6 - UW Platteville Wins Challenge
- 6 - MS Walk May 2
- 7 - National Community Service Events
- 8 - National News
- 10 - CGFM Corner
- 11 - Articles
- 14 - Calendar of Events
- 15 - Chapter Contacts

Monthly Footnotes

MARCH, 2010

VOLUME X, ISSUE 6



March Luncheon Meeting Welcome Members and Non-Members

TOPIC: Update on the Dane County Airport

SPEAKER: Bradley Livingston, Director, Dane County Regional Airport

DATE: Thursday, March 25, 2010

REGISTRATION: 11:30 a.m. **LUNCH:** 11:45 a.m.

COST: \$5 for Members, \$10 for Non-Members
\$0 for CGFM Members

PLACE: Talula, 802 Atlas Avenue (off Hwy 51 at Cottage Grove Road)

MENU: All meals served with French fries and fountain soda or iced tea

- Cheeseburger-with cheddar cheese, lettuce, tomato, red onion, pickle
- Basil-Marinaded Chicken Sandwich-with monterey-jack cheese, lettuce, tomato, red onion, pickle
- Roasted Veggie Wrap-roasted zucchini, yellow squash, red bell pepper, and onion with Italian seasoning and red pepper aioli in flour tortilla

RESERVATIONS

Please contact Sherri Voigt by **10 A.M. on Monday, March 22, 2010** with your name, membership status, meal choice at (608) 267-9818/e-mail: sherri.voigt@wisconsin.gov. If you need help getting a ride to lunch, please contact Sherri for car-pooling information.

NEW MEMBERS FIRST LUNCHEON MEETING

If you are a new member and this is your first luncheon, please note that when calling in your reservation. Your first chapter luncheon meeting is FREE!

BRING YOUR SUPERVISOR TO LUNCH ON AGA

One of the benefits of belonging to the Southern WI Chapter is that you can bring you Supervisor to lunch once annually to show your appreciation for his/her support of your participation in AGA. Why not invite them to this months meeting?

MARCH IS CGFM MONTH!

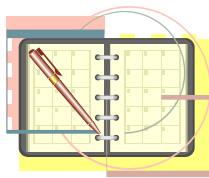
Certified Government Financial Managers (CGFM) receive a free lunch in March. Be sure to attend the lunch and be recognized!

ABOUT THIS MONTH'S LUNCHEON SPEAKER

Brad Livingston was appointed Airport Director of the Dane County Regional Airport in 2003. He previously served as Operations Manager and Deputy Airport Director in Madison from 1986 to 1996, before leaving to become Director of Operations for the Omaha-Eppley Airfield in Omaha, Nebraska.

Mr. Livingston lead the Dane County Regional Airport's terminal expansion project, which doubled the size of the terminal and introduced a distinctive Prairie Style architecture. Since returning to Madison, Mr. Livingston has worked with the airlines to add new nonstop air service to Washington, D.C., New York LaGuardia, and Dallas-Fort Worth, among others.

Mr. Livingston is a member of the Board of Directors of Airports Council International – North America. ACI-NA, based in Washington, D.C., represents local, regional and state governing bodies that own and operate commercial airports in the United States and Canada. ACI-NA's members enplane more than 95 percent of the domestic and virtually all the international airline passenger and cargo traffic in North America.



Save the Date



**AGA Southern Wisconsin Annual Symposium
UW-Madison Memorial Union
Tuesday, May 11, 2010**

PRESIDENTS MESSAGE

Sherri Voigt, CGFM, CPA

The member satisfaction survey is coming soon. Please take 5 minutes to complete the questions so we can better serve you. Also, don't forget to include any topic and/or location suggestions!

The brochure for the May 11 Symposium will be out soon (if not already.) We were once again able to keep the prices stable, at \$35-members and \$70-non-members. We have a great agenda with accounting and communication skills topics. I look forward to seeing you there!

March is CGFM Month! See the CGFM Corner on page 10. We will try to get the signed Governor's proclamation on the website as well. Our chapter has 40 members with the CGFM certification and 3 people in various stages of exam preparation. All CGFMs are invited to attend this month's lunch for free.

Highlights of the February lunch meeting (photos below.)

We had two extremely passionate speakers at the February meeting. I did my best to capture some notes for those who were not able to attend.

- The USA is the only developed nation with the privilege of going bankrupt for health care.

- Insurance companies exist for profit, not public health. They are more financial risk management companies than actual insurance.
- 11.7% of veterans are uninsured. (2008)
- 44,798 adult deaths annually due to uninsurance.
- Employers foot about 40% of the health care total bill.
- 2008 Health Industry Profits
 - \$51.6B Pharmaceuticals
 - \$ 8.6B Insurers/HMOs
 - \$ 6.7B Equipment and Supplies
 - \$ 1.6B Hospitals/Nursing Homes
 - \$ 3.2B Distributors/wholesalers*-from 05/09 Fortune Magazine*
- 1/3 of Americans are under- or uninsured
- Present health care bill:
 - Significant change to the \$2T US health care system
 - Would still be through the employer, small companies through state based
 - Insurance companies would no longer be able to deny coverage for pre-existing conditions
 - No more lifetime limits

Both speakers felt the current bill wouldn't go far enough to making real reforms in the industry

If you have more questions, I can get some of their source tables to you.

Sherri V. 🍷

FEBRUARY 25 LUNCH PHOTOS: HEALTH CARE – WHAT IT MEANS FOR INDIVIDUALS, FAMILIES, BUSINESSES, GOVERNMENTS, & HEALTH CARE PROVIDERS, EUGENE S. FARLEY, MD, MPH & JIM WRICH

Eugene Farley, MD

Eugene and Jim

Jim Wrich





CHAPTER MEMBER RECRUITMENT STIMULUS OFFER MARCH 17 - 31, 2010

Time Is Of The Essence – Don't Delay!

There is still time -- take advantage of this wonderful member recruitment stimulus offer.

The offer works as follows. Earn \$10 for each new chapter member you recruit up to a total of three new members. Only current chapter members are eligible for this recruitment incentive. In addition, each new member recruited in this stimulus event will receive a \$10 rebate on their first year's membership. This membership recruitment stimulus offer will run for 2 weeks from **Wednesday, March 17 through Wednesday, March 31, 2010**. AGA membership applications and information is on the national website <http://www.agacgfm.org/membership/joinnow.aspx>. AGA dues depend on the various membership categories. The chapter has no additional dues.

Membership benefits: <http://www.agacgfm.org/membership/membershipdefault.aspx>

Chapter Board Meeting – March 2, 2010

- Present: Dave Mellem, Tom Scheidegger, Lily Radivojevich, Dolly O'Laughlin, Roger Birkett, Sherri Voigt, Mary Laufenberg, Carrie Ferguson (have quorum for voting)
 - Treasurer's Report: \$18,997.33 balance
 - Membership: Member drive 3/17-31, have 92 members currently
 - CGFM: March is CGFM month. CGFMs will get a free lunch at the March meeting
 - Community Service: May 2 is the MS Walk
 - Chapter Recognition: Report is due 3/31 so get all info to Dolly by the week before.
 - Education:
 - Topics are all set and brochure can go out soon. Two paid speakers this year.
 - Food options were discussed. Breakfast and break will be the same as last year. We will try the sandwich buffet this year. A specific question about the lunch will be added to the evaluation form.
 - We will be able to keep the price at \$35 for members and \$70 for non-members.
 - April lunch meeting to be rescheduled
- due to 4 board members going to the national leadership training; we plan to offer a cd session of an audio conference
 - The member satisfaction survey will go later in the month. Sherri will get the questions from last year to board members for any changes.
 - Lunch prices: With rising prices, lunch subsidies are becoming very large. Options are raising prices to \$6 and \$12 or ending beverages. Add question to survey.
 - Other ways to economise: Chapter has been sending 3 board members to the PDC. We will still do that, but registration reimbursement is now capped at \$575 (\$200 off the early-bird rate of \$775.) First timers will still get the full registration amount. Paid attendees will report out on business sessions at the board meeting following the PDC. If more than 3 want to attend, further pro-rations will be made. The by-laws will be updated for change.
 - Sherri and Roger asked to attend PDC. Carrie expressed interest as a "maybe."
 - Next meeting is April 6.

Chapter Member George McDowell, 1954 - 2010



With deep regret we announce that George McDowell, 55, passed away suddenly and unexpectedly on January 28, 2010 at St. Joseph's Hospital in Chippewa Falls, Wisconsin. George was a member of the Southern Wisconsin AGA Chapter since 1998.

Chippewa County Administrator William Reynolds said, "George was the ideal public servant and gave his all for the success of this county. He was warm and caring, hard working and humble. Simply stated, he genuinely cared. Please join me in remembering him and his family in your thoughts and prayers." He is survived by his wife Teresa, a daughter, three sons, his parents, mother-in-law, sister, and three grandchildren. George was County Auditor and Finance Director for

Chippewa County since 1990. He graduated from UW-Superior with a B.A. in Accounting and was a CGFM and CPA.

George began working at Washburn County as their Finance Director and later for Pete, Marwick & Mitchell in Duluth before moving to Chippewa Falls in 1990. George was to be appointed as Interim County Administrator taking over for Administrator Reynolds, who is set to deploy to Afghanistan in March. He was a member of Chippewa Valley Bible Church in Chippewa Falls; a member of the Board of Directors of the Chippewa Youth Hockey Association, serving as their treasurer for many years.

Other interests of George's were his children's sporting events, including coaching youth football and hockey. An avid outdoorsman, he enjoyed both hunting and fishing, and loved spending time at his cabin in Trego.

WAY TO GO!!!
University of Wisconsin Platteville Team!

AGA Government Finance Case Challenge Winner Announced—
AGA would like to congratulate the University of Wisconsin -
Platteville team on their award. Both finalist teams, that included North Carolina State University, did an outstanding job with their reports and presentations in Washington, D.C. All teams constructed a Citizen-Centric Report for a fictional city. We congratulate the team on this great accomplishment in the first year of entering the competition. We hope to publish additional team photos and highlights from their trip.



Please join the AGA-Southern Wisconsin Team and walk with us on Sunday, May 2. This year, the walk starts at Warner Park. To join, go to: http://main.nationalmssociety.org/site/TR/Walk/WIGWalkEvents?team_id=185673&pg=team&fr_id=13766&s_tafld=75383 and click Join Team. Click box on Participant-Team Registration and enter your fundraising goal (if you mark a pledge here, it will bill you for it now.)

Contact Sherri Voigt if you have questions

You Can Volunteer for AGA National Community Service Projects April 27-30, 2010 in New Orleans and July 15 in Orlando

Community service and helping those that are less fortunate than ourselves has been an important part of what AGA is about. It may be hard to believe that **New Orleans** still needs our help almost five years after Katrina, but they do, and we're going back. The dates for our Fourth Annual National Community Service project are **April 27-30, 2010**. This project is sandwiched between the two weekends of the New Orleans Jazz and Heritage Festival ([View details.](#)) We will again seek lodging in the beautiful new University of New Orleans dormitory (actually two bedroom furnished apartments) with a rate of only about \$30/night/person.

Like last year, AGA will also create a second opportunity to experience what it's

like to work with Habitat for Humanity in conjunction with the PDC in **Orlando**, which also faces an affordable housing shortage. We will have a one-day community service event with Habitat in Orlando on Thursday, **July 15**, the day after the PDC ends. For this event, we will seek to extend AGA's special hotel rate to include this extra night.

We hope you will pencil in one or both of these dates on your calendar and join us for some of the fun! If you need additional information right now, please send **AGA Past National President Jeffrey S. Hart, CGFM** an e-mail at hart.jeff@epa.gov or call him at 303-312-6169. AGA will be sharing more details in a couple of weeks.



National News

From the National President



For the past two weeks, many of us have been glued to the television watching the 2010 Winter Olympics. I am always in awe of the athleticism displayed by these young men and women—the "best of the best" from around the world. Further, I am just amazed how at how close the scores are between the gold medal winner and those in 15th place. Sometimes only hundredths of seconds separate them. Often times, we quickly forget the names of those who did not place in the medal round; but, those who are in fourth place and beyond to the last person scoring are all tremendous athletes, each of them can probably run circles around us. My goodness, they made it to the Olympics! What an accomplishment!

Well, AGA is somewhat like these top athletes. AGA is made up of many members who represent the "best of the best" in their profession. As an organization, AGA represents the "best of the best" as we continue to move forward in Advancing Government Accountability. On February 18 and 19, AGA held another successful National Leadership Conference with more than 700 registered attendees. The conference was, by all accounts, an extreme success—a gold medal winner, if you will accept this

analogy. It is such a privilege to serve as your National President and be a part of AGA's success AGA as we reap the benefits of many who have served before us. [Read more.](#)

Log In and Win Big

Although renewal season is well under way, AGA thanks members who updated their profiles before Dec. 31. By doing so, you enabled AGA to keep in contact with you and ensure that our services and events remain focused on your needs in 2010. Three winners were drawn out of thousands who updated their profiles.

AGA sends a warm congratulation to the three lucky winners of the Sony Webbie camcorder systems:

Edward P. Jeye, Boston Chapter

Amanda Green, CGFM, New Orleans Chapter

Margaret Munson, Des Moines Chapter

Even if your name was not drawn for a camcorder, the time you took to edit your profile will be rewarded with superior member service. Update your information today. Simply go to [AGA's website](#) and log in using your member ID. Your password is your first initial immediately followed by your last name (unless you have changed it).

Remember to renew your membership before **March 31, 2010** and look out for more opportunities to get involved. Thank you for being an AGA member and for your contribution to building a more diverse and inclusive financial management community.

Six Weeks Left to Submit Your 2010 National Academic Scholarship Application

Are you or a family member pursuing undergraduate or graduate studies in disciplines such as accounting, auditing, budgeting, economics, finance, information technology, public administration, etc.? If so, consider applying for an AGA National Academic Scholarship today!

Each year, AGA National awards:

- Up to four \$3,000 full-time merit scholarships to AGA members and their family members,
- One \$1,000 part-time merit scholarships to AGA members and their family members, and
- One \$3,000 community service scholarship.

The **deadline for receipt of applications is Wednesday, March 31, 2010**. Apply now and take full advantage of your AGA membership.

[Download the application](#) or contact [Louise Kapelewski](#).

Continuing Education That Meets Your Needs

AGA now offers 41 courses, which are currently available for delivery at your organization.

Some of our newer courses include:

- Administration of ARRA Grants
- Building a Productive Team
- Collecting Testimonial Evidence
- Effective Writing Skills for Accountants and Auditors
- Ethics in the Workplace
- Fraud Detection and Prevention
- Powerful Presentations and Briefing Techniques
- The Government Audit: Basic Concepts Through Resolution
- Working Papers and Audit Evidence

- Writing Reports More Effectively

These AGA-sponsored courses are developed and taught by experts in their field of study. The courses are cost efficient, up-to-date, convenient, and meet the growing demands of the government financial profession. Also, if your organization's training needs are larger in scope or require a more customized approach, we can help assemble a tailored program that fits your organization needs.

For pricing and additional information, contact [Joe Jozefczyk](#) at 800.AGA.7211, ext. 307, or [Lynn Hoffman](#) at ext. 342.

In Their Own Words: AGA Members Tell Us What's In It For Them

"Possibly the most important benefit to me personally was that my peers in AGA encouraged me to run for president of our chapter. When I joined AGA just four-and-a-half years ago I never imagined I would be here. I started on the education committee almost immediately after I joined, and went on to be our newsletter editor and Webmaster for a couple years. This is most important to me because I never considered that I would be in this very important position; I always felt there were others who could do a better job; and I was extremely nervous. Now that my year is almost half over, I am very happy that my peers had the confidence in me that I did not; and they encouraged me to push myself beyond my comfort level. I am very proud to be president of our Idaho Centennial Chapter of AGA," *Laura Gilmore, President, AGA's Idaho Centennial Chapter*

The Value of AGA Membership-- What Does That Really Mean? What's in it for Me?

By: Bobby Derrick, CGFM, and Ray Harris,
CGFM

(Reprinted from "Capital Ideas," the
newsletter of AGA's New York Capital
Chapter)

Every so often, these questions come up
in conversation. Both members and
nonmembers want to know the tangible
and intangible value of their dues.

Hopefully, the following will help you
decide to join the New York Capital
Chapter of AGA, renew your membership
and/or sponsor a new member.

Tangible

Let's start with the tangible factors. As you
may know, the chapter is a perennial
national award winner for its extensive,
cost-effective education and training
programs. This year, the chapter is
offering around 100 continuing
professional education (CPE) credits at
significantly reduced rates for members.
While the cumulative savings to members
from registering for these programs far
exceed the cost of membership, the
chapter also offers 12 two-CPE audio
conferences at no cost to members. That's
24 CPEs valued at \$180 for free! In fact,
the estimated savings (that is, the
difference between the member and
nonmember rates) for all the chapter's
educational events this year exceeds
\$500. Further, based on program
evaluations from the participants, the
quality of these events is excellent and is
reason enough why high attendance
continues despite these tough financial
times.

In addition, your membership includes the
quarterly magazine *Journal of Government
Financial Management* and weekly e-
newsletters (*TOPICS* and *AGA Today*),
periodic research reports from national
AGA and the chapter's annual Continuing

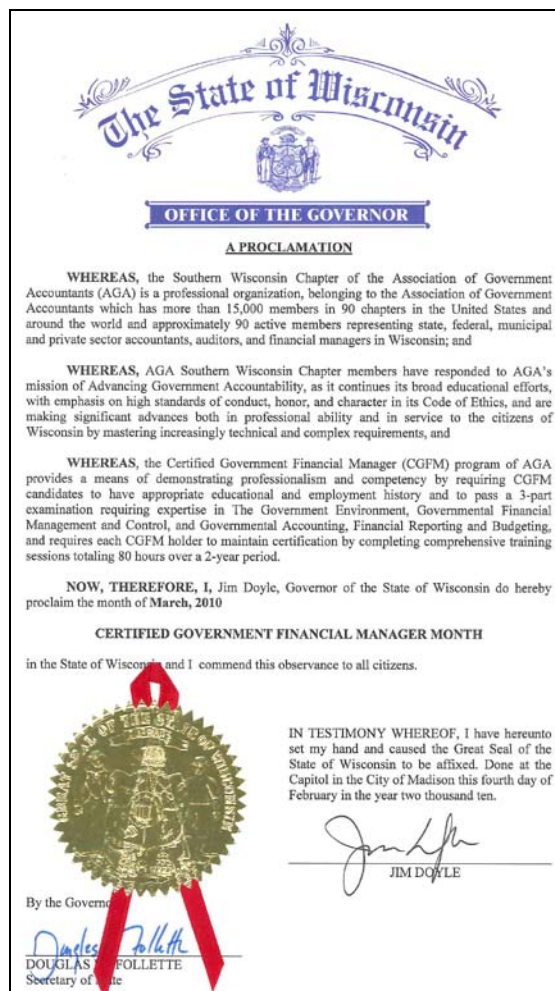
Professional Education Program and
Events guide and award-winning
newsletter and website. [Read more.](#)

CGFM Corner

March is CGFM Month!

For the past five years, thanks to the
initiative and dedication of AGA regional
and chapter leaders, states and local
governments have been declaring March
a CGFM month. This project has been a
great example of AGA leadership and
teamwork and continues to help spread
the word about the CGFM Program.

Your AGA Southern WI Chapter is proud
to continue this tradition for 2010.



Articles

Federal News

Focus Shifts from First Stimulus to Second

With the economic stimulus measure now a year old, the two parties continue sparring over the first bill's effectiveness even as they plot strategy for a second package coming through the legislative pipeline. "President Obama defended his year-old economic stimulus package on Wednesday, as Republicans and Democrats took to the Internet and the airwaves to wage a furious partisan battle over whether the bill was a monumental waste of taxpayer money or had rescued the economy from catastrophe," the *New York Times* reports. *The Washington Post* says, "The giant economic stimulus package enacted a year ago has helped stabilize the economy but has not made much of a dent in the nation's vast unemployment." *The Associated Press* gives a similar summary: "The jobless got a hand. Taxpayers got tax breaks. And a sinking economy stabilized. But the public's response to President Barack Obama's recession-fighting policies has been increasingly dreary. And the reason is simple: six months of unemployment above 9.6 percent." Ben Pershing, *The Washington Post*. [Read more.](#)

Homeland Security Reports Losing Guns

The nation's Homeland Security officers lost nearly 200 guns in bowling alleys, public restrooms, unlocked cars and other unsecured areas, with some ending up in the hands of felons. The problem, outlined in a new federal report, has prompted disciplinary actions and extra training. Most of the misplaced weapons including handguns, shotguns and military rifles were

never found. "Most losses occurred because officers did not properly secure firearms," says the Homeland Security inspector general report. At least 15 of the guns ended up in the hands of gang members, criminals, drug users and teenagers, inspector general Richard Skinner found. His report documented 289 missing firearms from fiscal year 2006 through 2008, although not all were lost because of negligence. Some were lost in the aftermath of Hurricane Katrina and others were stolen from safes. Thomas Frank, *Federal Times*. [Read more](#)

State and Local News

States Renege on Local Aid

In December, Stephen Laker found himself in an agonizing position. As public health administrator for the Vermilion County Health Department in Illinois, Laker was six days into a \$9,500-a-day payroll cycle but he had only \$7,000 in the bank. Under a grant arrangement with the state of Illinois, the public health agency was committed to providing certain services for which it would be reimbursed by the state. But massive budget shortfalls forced the state to withhold the reimbursement. As of December 1, Illinois owed the Vermilion County agency almost \$800,000. Laker's dilemma is familiar to cities, counties and school districts nationwide. State lawmakers are holding onto payments owed to municipal governments and using the money to balance state books. **David Harrison, Special to Stateline.org.** [Read more.](#)

A Year After the 2009 Stimulus; Five Ways to Gauge Impact on States

After a year of operation, President Obama's Recovery Act for the economy has generated controversy but is also drawing bipartisan praise in places where the money has reached the massive \$787 billion spending package stimulating the economy? Here are five points of reference that go beyond that headline number to gauge its Main Street impact. Mark Trumbull, *The Christian Science Monitor*.

[Read more.](#)

New Report Reveals Massive Underfunding in State Retirement Systems

States are facing a funding shortfall of \$1 trillion. That's the gap at the end of fiscal year 2008 between the \$2.35 trillion states had set aside to pay for employees retirement benefits and the \$3.35 trillion price tag of those promises. Why does it matter? Because every dollar spent to reduce the unfunded retirement liability cannot be used for education, public safety and other needs. Ultimately, taxpayers could face higher taxes or cuts in essential public services. A new report from the Pew Center on the States, [The Trillion Dollar Gap: Underfunded State Retirement Systems and the Road to Reform](#), shows why states must take strong action now or taxpayers will suffer later. Pew Center on the States. [Read more.](#)

Federal Accounting Corner

New Treasury Agency Symbols

The Common Government wide Accounting Classification (CGAC) structure document discussed using a longer Treasury Agency (Fund) Symbol, known as TAS or TAFS. In particular, the Agency Identifier component of the symbol at the beginning will be expanded from two to three digits. A

preliminary crosswalk was finally released in October. Simcha Kuritzky, CGFM, CPA.

[Read the entire column.](#)

Private Sector News

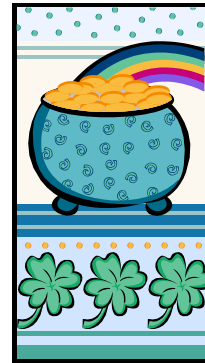
Taxpayers Cheer IRS Move to Regulate Tax Preparers

Taxpayers overwhelmingly agree with the Internal Revenue Service plans to require tax preparers to meet competency and ethical standards, according to a new report by the IRS Oversight Board. In the report, 78 percent of those surveyed indicate that it is of grave importance that return preparers meet standards of ethical behavior, while 73 percent believe it is very important that tax preparers meet competency standards. The numbers are in line with findings from a 2008 survey by the board. While the survey did not explicitly ask about the IRS's current plans to require tax preparers to register, take continuing professional education courses and be tested, 55 percent of taxpayers said it would have a great deal of influence on them if the preparer is subject to regulations or licensing by a government entity, either federal or state. That's compared to 39 percent who said there would be a great deal of influence on them in choosing a preparer if the preparer is subject to regulation or licensing by an industry association. *WebCPA*. [Read more.](#)

AGA's FMSB Seeks Help on Reviewing FASB Pronouncements

GASB on Jan. 29 issued an exposure draft of a proposed Codification of Pre-Nov. 30, 1989 FASB Pronouncements. The objective of the project is to specifically identify provisions in FASB Statements and Interpretations, Accounting Principles Board Opinions, Accounting Research Bulletins of the AICPA Committee on Accounting Procedure, and AICPA Accounting Interpretations, issued on or before Nov. 30, 1989 (collectively termed the FASB

Pronouncements) that do not conflict with or contradict GASB pronouncements and to incorporate those provisions into the GASB's literature. These were referenced in paragraph 17 of GASB Statement No, 34, *Basic Financial Statements and Management Discussion and Analysis for State and Local Governments*. The comment period is six months, but it is still going to be a monumental task to review the entire exposure draft. AGA's Financial Management Standards Board (FMSB) reviews and comments on all GASB proposed statements of standards, but may need additional volunteer help with this project. If you work in state and local government, have an interest in accounting standards and have some experience in responding to GASB on its proposed standards or to other accounting standard setters, please contact [Anna Miller](#), FMSB staff liaison. You could learn how the FMSB works and help make a difference!



SHARE YOUR NEWS

Do you have some interesting news that your fellow chapter members may be interested in? If so, please submit an article to the Newsletter Editor at radiojevich@co.dane.wi.us. Deadline for submission of articles is the 25th of the month. Feel to send in topic suggestions or features to include.

COMMENTS

We would love to hear feedback on the newsletter changes. Let us know what you like, what you hate, what we can do better! Contact the Newsletter Editor at radiojevich@co.dane.wi.us or the Chapter President at sherri.voigt@wisconsin.gov

ARE YOU MOVING?

If you are moving, or have already moved, please notify both your chapter and AGA National of your address change. You can update your address online at the national website:

www.agacgfm.org/membership/form_address.htm

www.aga-wis.org



Southern Wisconsin Chapter Calendar of Events for 2009-2010

August 4, 2009 – Board Meeting, Old Country Buffet, Madison

September 1, 2009 – Board Meeting, Old Country Buffet, Madison

September 24, 2009 - Retirement System Update, Sari King, Constituent Relations,
Department of Employee Trust Funds (ETF), Great Dane - Fitchburg

October 6, 2009 – Board Meeting, Old Country Buffet, Madison

October 22, 2009 – State of Wisconsin Strategies for the American Recovery and
Reinvestment Act (ARRA), Susan Crawford, Chief Legal Council to Governor
Doyle, Babe's Restaurant

November 3, 2009 – Board Meeting, Old Country Buffet, Madison

November 19, 2009 – Wisconsin Economic Update, John Koskinen, Chief Economist,
Wisconsin Department of Revenue

December 1, 2009 – Board Meeting, Old Country Buffet, Madison (meeting cancelled)

January 5, 2010 – Board Meeting, Old Country Buffet, Madison

January 28, 2010 – Annual Tax Update, Mardee L. Blattner, CPA, MST, Manager,
Baker Tilly Virchow Krause & Company – Imperial Garden's Restaurant,
Madison

February 2, 2010 – Board Meeting, Old Country Buffet, Madison, WI (meeting cancelled)

February 25, 2010 – Eugene S. Farley, MD, MPH, Health Care – What It Means For
Individuals, Families, Businesses, Governments, and Health Care Providers –
Dayton Street Café, Madison, WI

March 2, 2010 – Board Meeting, Old Country Buffet, Madison

March 25, 2010 – Bradley Livingston, Director, Dane County Regional Airport

April 6, 2010 – Board Meeting, Old Country Buffet, Madison

April, 2010 – luncheon date, topic, and location to be determined

May 2, 2010 – MS Walk 2010 (community service event)

May 4, 2010 – Board Meeting, Old Country Buffet, Madison

May 11, 2010 – *Annual Spring Symposium*

May 20, 2010 – luncheon topic and location to be determined

June 1, 2010 – Board Meeting, Old Country Buffet, Madison

Note: Community service, VITA, and social events will be announced during the year.

AGA Southern Wisconsin Chapter 2009-2010 Officers and Directors

President – Sherri Voigt, CGFM, CPA, DNR, sherri.voigt@wisconsin.gov, 608-267-9818

President Elect – Vacant

Past President – Eric Busse, DPI eric.busse@dpi.state.wi.us, 608-267-9199

Chapter Recognition – Dolly O’Laughlin, olaughlin@co.dane.wi.us, 608-242-6314

Secretary – Vacant

Treasurer – Roger Birkett, CPA, jabirk@charter.net

Historian – David Mellem, CGFM, CIA, CISA, US DHHS OIG, david.mellem@oig.hhs.gov,
608-264-5415 ext 25

Membership Chair – David Mellem, CGFM, CIA, CISA, US DHHS OIG,
david.mellem@oig.hhs.gov, 608-264-5415 ext 25

Newsletter Editor – Lillian Radivojevich, radivojevich@co.dane.wi.us, 608-284-4801

Education Co-Chairs –

Carrie Ferguson, CPA, LAB, carrie.ferguson@legis.state.wi.us, 608-259-9839

Mary Laufenberg, CGFM, CPA, DOR, mary.laufenberg@revenue.wi.gov, 608-266-1670

Webmaster – Scott Thornton, scott@goochpages.com

Community Service Chair – Sherri Voigt, CGFM, CPA, DNR, sherri.voigt@wisconsin.gov

Research Coordinator & Liaison w/Other Profession Organizations – Vacant

CGFM Chair – Eric Busse, DPI eric.busse@dpi.state.wi.us, 608-267-9199

Awards Chair – Vacant

Early Careers Chair – Vacant

Directors -

Julie Gordon, CPA, UW System, jgordon@uwsa.edu, 608-263-4395

Thomas A. Scheidegger, CPA, thomas.scheidegger@bakertilly.com

Chapter Website – www.aga-wis.org

Chapter Address – PO Box 1454; Madison, WI 53701-1454



SOUTHERN WISCONSIN CHAPTER