



# Monthly Footnotes

FEBRUARY 2011

VOLUME XI, ISSUE 5

SOUTHERN  
WISCONSIN  
CHAPTER



## February Luncheon Meeting Welcome Members and Non-Members

**TOPIC:** Holly Skaife, University of WI, Madison

**SPEAKER:** Capital Market Consequences of the Sarbanes-Oxley Act of 2002

**DATE:** Thursday, February 23, 2012

**REGISTRATION:** 11:30 a.m. **LUNCH:** 11:45 a.m.

**COST:** \$6 for Members, \$12 for Non-Members

**PLACE:** Dayton Street Café (Inside the Concourse Hotel, 1 West Dayton Street)

**MENU:** Meals include soda, coffee, or tea

- **Salad Bar** - variety of salads, toppings, soups
- **Traditional Burger** – dry-aged highland beef served with fries

**RESERVATIONS:** Please contact Sherri Voigt by 1 p.m. on Monday, February 20, 2012 with your name, membership status, meal choice at (608) 267-9818/e-mail: [sherri.voigt@wisconsin.gov](mailto:sherri.voigt@wisconsin.gov). If you need help getting a ride to lunch, please contact Sherri for car-pooling information.

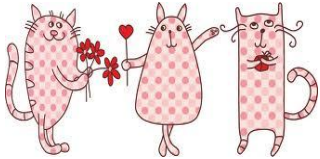
### BRING YOUR SUPERVISOR TO LUNCH ON AGA

One of the benefits of belonging to the Southern WI Chapter is that you can bring you Supervisor to lunch once annually to show your appreciation for his/her support of your participation in AGA. Why not invite them to this months meeting?

### Inside This Issue

1. Luncheon Meeting
2. President's Message
4. Member Recruitment Results for Chapter
5. Training Seminar – March 1, 2012
6. Annual Spring Symposium – May 10, 2012
6. Chapter Newsletter Award
7. Employment Opportunities
8. National News
10. CGFM News
10. Articles
15. Calendar of Events
16. Chapter Contacts





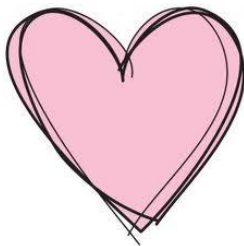
## NEW MEMBERS FIRST LUNCHEON MEETING IS FREE

If you are a new member and this is your first luncheon, please note that when calling in your reservation. Your first chapter luncheon meeting is **FRFFI**



### ABOUT THIS MONTH'S LUNCHEON SPEAKER

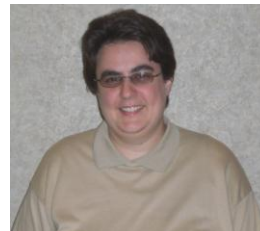
Hollis (Holly) Skaife PhD is the David Lesar Chair in Business and a full professor at the University of Wisconsin-Madison. Holly's research addresses international financial reporting issues and corporate governance including the role of International Financial Reporting Standards (IFRS), internal control and auditing in the development of high quality financial information. Her research is published in journals including *The Accounting Review*, the *Journal of Accounting Research*, the *Journal of Accounting and Economics*, and *Contemporary Accounting Research*, and many of her studies are available at [www.ssrn.com](http://www.ssrn.com). Holly teaches various accounting courses to undergraduate, masters, Ph.D. and executive education students. She currently teaches financial accounting to MBA students. Holly graduated from Central College in Pella, IA and obtained both the CPA and a CMA certification. She practiced as a public accountant for 3 years before returning to the University of Iowa for graduate studies. She frequently chairs committees of national professional organizations, serves on numerous editorial boards, and served on the IFRS Advisory Council (AC) of the International Accounting Standards Board (IASB).



### PRESIDENTS MESSAGE Carrie Ferguson, CPA



During January, we were treated to an update from Mardee Blattner, a manager with Baker Tilley Virchow Krause, LLP, on changes to both Federal and State income tax form. Okay – given the topic was taxes, maybe “treat” is the wrong word, but Mardee’s presentation was informative and engaging, and we were definitely pleased she could provide an update to help make the tax process as painless as possible. Mardee also answered a number of questions from the audience, so hopefully, come April 17th (yes, it looks like we are getting a



couple extra days again this year), all our Form 1040's and Wisconsin 1's will be correctly and timely submitted.

Also at our January luncheon meeting, Bea Beasley recognized Michele Tessner's successful completion of the last part of her CGFM exam to obtain her certification. Congratulations on this

achievement Michele! You may remember Michelle is the CGFM co-chair along with Bea, so if you are not yet a CGFM and have questions about becoming a CGFM yourself, be sure to ask either of them (see their contact information at the end of this newsletter). We know a few of you are working on exams, and we also hope others will decide to start the certification process. We would love to have more presentations to recognize members for obtaining their certification at future luncheon meetings.

In addition, you may remember I mentioned in my last president's message that Lillian Radivojevich won first place award for editing our chapter newsletter among chapters similar in size to the Southern Wisconsin chapter. At

Happy  
Valentine's  
Day

**2011 Southern Wisconsin  
Chapter Officers and Directors**



Pictured (left to right): front: Tom Scheidegger, Mary Laufenberg, Sherri Voigt, Dolly O'Laughlin; back: Roger Birkett, David Mellem, Lillian Radivojevich, Carrie Ferguson

our January meeting, I finally had the chance to present her formally with her award from AGA National. Congrats again, Lily!

Of course, where would we be if this newsletter wasn't posted on our website? Scott Thornton has been our webmaster for a number of years now, and he makes sure that the information on our website remains current. Be sure to check out the site at <http://www.aga-wis.org>. Not only are both the current and past newsletters posted out there, the website also has number of useful links, such as upcoming meetings and other training opportunities, membership information, CGFM information, community service activities, links to other useful websites (e.g., the national AGA website), job postings that are brought to our attention, and chapter history.

If you are already a member, you should receive an email each month from our membership chair, David Mellem, with a link to the newsletter as posted on our website. Or, if you are not yet a member, Dave can answer any questions you might have. While our recent 20-20-20 recruitment campaign has ended, it is not too late to join as a member.

In fact, if you are not yet a member, this may still be a good time to join, especially if you are planning on attending our upcoming one-day training on Cost Principals and Cost Allocation Rules and Regulations for Federally-funded Grants and Contracts, taught by Joseph Stertz. Joe has taught this course in the past, and many have found the information helpful for ensuring they are accurately managing or reviewing grant information. Be sure to hurry and sign up, though, as space is limited. However, if this March 1 time and/or the Madison location don't allow you to attend, we do plan to offer the course again this fall in Mequon

## Six Chapter Members Earned Cash in Chapter Recruitment Program

Six chapter members (four new and two current) earned cash in the Southern Wisconsin Chapter's 20-20-20 Member Recruitment Program that ran from November 1, 2011 through Friday, January 20, 2012.

Rebates of \$20 are being paid to each new member who joined AGA during the program. Sponsors were not needed to earn the rebate. The four new members are:

- Atena Lodhi, Medical College of Wisconsin Affiliated Hospitals
- Kathryn Guralski, Wisconsin Department of Public Instruction
- Ruth Schultz, Madison Metropolitan School District
- Michele Young, Wisconsin Department of Natural Resources

A single incentive of \$20 is being paid to each chapter member sponsor who recruited one or more new members. The two sponsors are:

- Michele Tessner, Wisconsin Department of Public Instruction
- Sherri Voigt, Wisconsin Department of Natural Resources

A bonus payment of \$20 is being awarded based a drawing from the names of sponsors who recruited two or more new members. Since only one sponsor recruited more than one member, the drawing was

not needed and the bonus is being paid to that sponsor:

- Michele Tessner, Wisconsin Department of Public Instruction

Details of the program were published in the November 2011 chapter newsletter. The chapter created the program based on Membership Recruitment Scholarship Funds made available by the AGA National Office. Our chapter received an award of \$155 for the program. Unused funds are returned to the National Office. The chapter submitted its report of funds used to the National Office by the due date of January 27, 2012. We consider this program to be a success and anticipate that it may be repeated in some form next year.

Two members who joined our AGA chapter this membership year prior to the chapter recruitment program are:

- Deanna Alexander, Milwaukee County – Behavioral Health Division
- Andrew Stovich, Betty Brinn Children's Museum

Welcome to all our new chapter members!

You don't have to wait to recruit new members. The National Office is currently running a **Member-Get-A-Member Recruitment Campaign**, subtitled "**Ready, Set, Grow**" with several prizes and awards. This program was summarized in the November 2011 chapter newsletter. Campaign details are at [www.agacqfm.org/membership/mem\\_campaign.aspx](http://www.agacqfm.org/membership/mem_campaign.aspx).



**REGISTER TODAY!**

**Cost Principles, Cost Allocation Rules and Regulations for Federally Funded Grants and Contracts**

**Thursday, March 1, 2012 -- 8:30 a.m. to 4:30 p.m.**

Wisconsin Dept Of Revenue  
2135 Rimrock Road  
Madison, WI

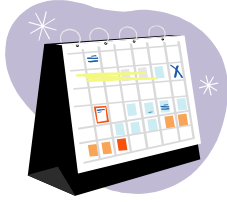
**Presented by:  
Joseph Stertz**

**The AGA Southern Wisconsin Chapter** is offering a 1-day training seminar on Cost Principles and Cost Allocation Rules and Regulations for Federally Funded Grants and Contracts. The seminar will cover, among other topics, OMB Circular A-102 (called the "Common Rule") and 2 CFR 225, formerly OMB Circular A-87 for state, local and tribal governments.

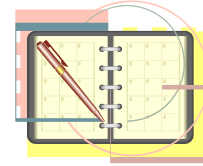
Joseph Stertz will conduct the seminar on March 1, 2012 at the State of Wisconsin Department of Revenue in Madison, Wisconsin. Joe has over 30 years of experience as an auditor and a manager and has taught this course throughout the United States.

Seminar fees are \$65 for AGA members, \$115 for non-members and \$45 for retired members. The fee includes the updated training manual, a breakfast of coffee and muffins, a choice of box lunch, and afternoon break.

Details are included in the seminar brochure, as well as information on obtaining the lower registration fee by joining AGA. The seminar brochure can be printed and downloaded from the chapter website at [www.aga-wis.org](http://www.aga-wis.org). Register by February 17<sup>th</sup> including your choice of box lunch sandwich. Space is limited to 49 attendees.



## Save the Date



**AGA Southern Wisconsin Annual Symposium  
UW-Madison Union South  
Thursday, May 10, 2012**

## Don't Forget!

### **READY, SET, GROW ... Member Get-a-Member Campaign**

The 2011 Ready, Set, Grow, Member Get-A-Member Contest, runs from May 1, 2011 through April 30, 2012. AGA is offering several incentives to recruit new members. Learn more at

[http://www.agacgfm.org/membership/mem\\_campaign.aspx](http://www.agacgfm.org/membership/mem_campaign.aspx).



**Southern Wisconsin Chapter Placed 1<sup>st</sup> in  
2011 Newsletter Contest, Category D**

Our sincerest congratulations go out to Newsletter Editor Lillian Radivojevic. She was able to attend the January 26 lunch meeting and accept the plaque awarded by National AGA for the 2011 program year. Lily, gracious as always, commented that "It takes a village" to create our monthly product.

Please feel free to send Lily any suggestions you have for the newsletter, including topics or features you would like to see.

[radivojevic@co.dane.wi.us](mailto:radivojevic@co.dane.wi.us)



## EMPLOYMENT OPPORTUNITIES

### **Financial Management Supervisor Chief of the Internal Audit Section**

#### **Department of Health Services - Office of the Inspector General**

The Office of the Inspector General (OIG) was recently created within the Department of Health Services (DHS) to consolidate and improve the Department's public assistance program integrity and fraud prevention efforts. DHS manages many of the state's largest public assistance programs, including Medicaid, FoodShare, and the Women, Infants and Children (WIC) Program. The OIG conducts audits of providers who receive department funds, performs internal audits of department programs and operations, and investigates allegations of fraud, waste, or abuse of DHS resources by contractors, providers and recipients.

The OIG is recruiting for a newly created position, the Chief of the Internal Audit Section classified as a Financial Management Supervisor. The position reports directly to the Inspector General who reports to the DHS Secretary. The primary function of this position will be to oversee internal and single audit functions of DHS and to conduct IT audits to provide assurance that sufficient controls are in place to effectively monitor computer access security. For additional information and to apply for this position, please go to our website at:

[http://wisc.jobs/public/job\\_view.asp?annoid=56929&jobid=56444&index=true](http://wisc.jobs/public/job_view.asp?annoid=56929&jobid=56444&index=true)

**The deadline to apply for this position is February 9, 2012.**

### **Transportation Fiscal Analyst Wisconsin Department of Transportation**

The Wisconsin Department of Transportation is looking to fill its vacancy of Transportation Fiscal Analyst 1 at the Hill Farms complex in Madison. This position offers attractive benefits and a competitive salary. Come see why the DOT is such a great place to work!

This position serves as the division's principal technical resource and senior expert on how federal and state financial aid is allocated to specific programs. This position is responsible for managing the application of funds in various highway improvement programs that encompass in total over \$600 million dollars in let contracts annually and is allocated among 30 different appropriations. This position also provides advanced level policy analysis, program evaluation and impact assessment related to the use of financial aid. For additional information and to apply for this position please reference the following website:

[http://wisc.jobs/public/job\\_view.asp?annoid=57142&jobid=56657&index=true](http://wisc.jobs/public/job_view.asp?annoid=57142&jobid=56657&index=true)

**The deadline to apply for this position is February 7, 2012.**



## National News



**Richard O. Bunce, Jr.**  
**Senior Advisor to the**  
**President**

### **From the National President, Richard O. Bunce Jr., CGFM, CPA**

If you're like most people I've talked with this month, you're hustling to wrap up some major work projects before the end of the year, trying to find time to decorate the house for the holidays, and preparing to welcome family and friends or to get on the road to visit them. Life's pace always hits its peak at this time of the year.

The schedule for your national leadership team is no less hectic. Last week the National Executive Committee (NEC) met one last time before the end of the year, with three main items dominating the agenda.



First, finances and financial planning were front and center. We had a lengthy and productive discussion about the reports of the Finance and Budget Committee, including the financial results for the program year to date, the potential impact of the economy on our Association activities and development of the budget for the 2012–2013 program year. We plan to finalize the 2012–2013 budget at the February meeting and will present it to the National Board of Directors at the July meeting in San Diego.

Next, our consultants from Larson Allen attended the meeting to discuss the status of the Enterprise Risk Management project. Much progress has been made, and we expect to receive the consultants' final report at our February NEC meeting. The NEC will then evaluate the report recommendations and work with the National Office staff to develop plans to position AGA to deal with the challenges ahead while improving member value. [Read more.](#)

### **From the National Office**

#### **Renewal Season is Here; Renew by Mail or Online**

Annual membership and CGFM renewal packets should be arriving in mailboxes the second week in February. Members don't have to wait--renew online today. Please encourage your chapter members to use this quick and easy renewal method.

**How to Renew Online:** Access the [AGA website](#) and click AGA Login on the right top corner of the screen. Log in using your membership ID number and password (your



first initial followed by your last name, no spaces), click on the gray billing button above your name. All you have to do is input your credit card information and hit submit. The transaction will automatically process via our secure server and the renewal information will be automatically updated in AGA's in-house membership system. While you are logged into the Members Only section, be sure to look at your contact information and make any updates (especially your e-mail address). If you have any questions, contact AGA at 703.684.6931 or 800.AGA.7211.

### **Audio Conference on Federal Financial Management Imperatives Feb. 8**

AGA is pleased to announce a new audio conference on the pressures on government financial managers to cut costs while maintaining services. The audio conference, titled, "The New Stewardship Imperative-- Federal Financial Management at the Crossroads" is scheduled for 2 - 3:50 p.m. EST **Feb. 8**.

Speakers will discuss the major "drivers" bearing down on government financial managers: the continuing economic crisis, the debates over cutting up to \$4 trillion in government spending over the next 10 years, and the looming presidential election. These drivers mean cost containment, savings, recouping lost dollars, and jettisoning wasteful programs are of



paramount importance. This audio conference will describe techniques and tools that are proving effective in responding to these pressures.

To share their knowledge and expertise in government financial management and government operations are three Grant Thornton executives: **Nilesh Chudasama**, senior manager, **Tom Coccozza, CGFM**, director, and **James G. Huse Jr.**, senior adviser.

[View cost and registration information.](#)

### **Apply for 2012 National Academic Scholarships**

Are you or a family member pursuing undergraduate or graduate studies in disciplines such as accounting, auditing, budgeting, economics, finance, information technology, public administration, etc.? If so, consider applying for an AGA National Academic Scholarship today!

Each year, AGA National awards:

- Up to four \$3,000 full-time merit scholarships to AGA members and their family members
- Up to two \$1,000 part-time merit scholarships to AGA members and their family members
- One \$3,000 community service scholarship

The deadline for receipt of applications is Friday, March 30, 2012. [Download a copy of the application.](#)



## CGFM Corner

### AGA, CGFM Annual Renewals Now Available Online

Thank you for your support of AGA over the past year. Get your 2012 started right by [renewing!](#) Don't risk letting your membership or CGFM certification lapse. Get ahead of the pack by renewing online now.

Electronic renewals will be e-mailed later this week. Paper copy renewals will be mailed in

early February. The due date for renewal payments is **March 31, 2012**. Whether you're involved in local, state, federal government or private industry, we are getting the word out to financial professionals everywhere on the issues that matter in financial management.

It takes only minutes to renew online at [www.agacgfm.org](http://www.agacgfm.org). Your AGA ID number is the login, and your password is your first initial immediately followed by your last name, unless you have changed it.

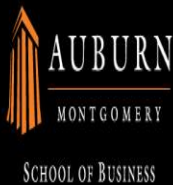
Once you log in, you will see your AGA profile. Press the billing button to renew with a credit card on our secured server. While you are logged in, please take a moment to review your membership information and update any incorrect items. You may also print your membership card online. If you need assistance, please call the AGA Customer Satisfaction Center at 800.AGA.7211.

## Articles

### *Federal News*

### Lawmakers Decry Extended Pay Freeze to Finance Payroll Tax Holiday

Washington-area lawmakers are determined to keep proposals targeting federal pay and benefits from being included in any final legislative deal that extends the payroll tax cut. "We don't want them in the final bill," said Sen. Ben Cardin, D-MD, during a conference call



**Government Financial Management Program**

Get the competitive edge - Courses online

Visit [www.aum.edu/gfm](http://www.aum.edu/gfm)  
or call 334-244-3495

with reporters Wednesday, referring to provisions in House-passed legislation that would prolong the two-year federal pay freeze through 2013 and would increase the amount government workers contribute to their pensions. The House on Tuesday approved the bill that finances the payroll tax holiday partly through the extended salary freeze and higher rates of contributions from feds toward their retirement benefits. The House bill also would freeze lawmakers' pay through 2013 and require members of Congress to contribute more to their pensions. —Kellie Lunney, Government Executive. [Read more.](#)

### **GAO: IT Dashboard Accuracy Improving**

The Office of Management and Budget is judging your agency's performance on what's on the IT dashboard. But if the data on the dashboard is wrong, you might be in trouble you shouldn't be in.

But the good news is that performance is often better than what the Dashboard reflects, said David Powner, the director of information technology management issues at the Government Accountability Office (GAO). In previous reviews of the IT Dashboard, which launched in beta format in June 2009, GAO found that much of the data on the site was inaccurate. However, in the third such review of the online tool, GAO has seen a marked improvement. —*Federal News Radio*. [Read more.](#)

### *State and Local News*

### **Will State Pension Plans Run Out of Money?**

With Christmas just around the corner, here's a column that will surely win me the Pension Grinch of the Year award for 2011. Don't blame me, however, because I'm just the scribe here. This column merely highlights the worrisome implications of a [new research](#)

[report](#) by the prolific scholars at Boston College's Center for Retirement Research, headed by the insightful professor Alicia Munnell. Munnell's Boston College (BC) team has studied the implications of proposed governmental accounting standards on the reported financial condition and funding status of 126 public pension plans. On the face of it, you'd think this stuff would be about as exciting as a typical actuarial report's demographic assumptions or the accounting-basis footnotes to a municipal financial statement. But it contains an appendix that I predict will have tongues wagging in more than a dozen state capitols. That's because of an innocuous and easily overlooked column called the *Run-Out Date*. That is the calendar year when the pension trust fund would be projected to literally run out of money under the proposed governmental accounting standards methodology for evaluating the funding condition of public pension plans. GASB kibitzers call it the "depletion date." —Girard Miller, *Governing*. [Read more.](#)

### **How Texas Conquered a Mountain of Food Stamps Applications**

Two years ago, the 316 offices in Texas where people go to sign up for food stamps were the very image of a government backlog. Long lines of frustrated people, many of them hungry, snaked through dingy spaces designed to





handle much smaller crowds. The back offices weren't much better. Desks of state employees were littered with piles of applications—in boxes under workers' desks and stacked on top of them—that hadn't yet been entered into the state's computer systems. Today, the system Texas has in place for handling food stamp eligibility is drastically improved — so much so that the old system is almost unrecognizable. — Melissa Maynard, *Stateline.org*. [Read more.](#)

### *Federal Accounting Corner*

#### **Contract Authority**

Sometimes agencies need to obligate funds before they receive their appropriation or warrant. Congress may authorize the agencies to obligate in advance of the appropriation, which is called contract authority, though no expenditures or disbursements can take place until new

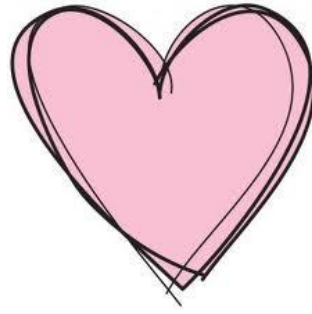
authority (generally an appropriation warrant but it can be reimbursable authority or transferred in) is given. The Standard General Ledger (SGL) accounts and posting entries for contract authority can be confusing. While they have the same three stages (anticipated, authorized and funded) as most funding sources, the accounts are not in strict logical sequence and are squeezed together in a narrow spectrum of the SGL account series. —Simcha Kuritzky, CGFM. [Read more.](#)

### *Private Sector News*

#### **The Single Most Important Improvement to your Resume for Landing a Job**

When you're job hunting, even small tweaks to your resume can make the difference between getting the attention of a hiring manager and getting thrown in the discard pile. But all tweaks are not created equal. What's the value of a fancy resume template, for example? Marginal. Including a headshot? Unless you're an actor, it's actually detrimental. So what is effective? Where should you spend your time? Simply put, pay attention to customizing the keywords in your resume to specific job descriptions. It turns out that at many companies, your resume is never seen by a human being until after it gets flagged as "interesting" by software that scans your resume for potential matches to skills and experience the company is looking for. — Dave Johnson, *MoneyWatch*. [Read more.](#)





## *Accounting Standards News*

### **AGA Updating SEA Guidelines and Scoring Rubric**

AGA is updating the guidelines and scoring rubric for preparing and reviewing Service Efforts and Accomplishments (SEA) reports. The update is based on the Governmental Accounting Standards Board's (GASB) *Suggested Guidelines for Voluntary Reporting, SEA Performance Information*.

AGA and Rutgers Public Performance Measurement and Reporting Network created a [website](#) to assist governments in preparing reports using GASB's guidelines as a framework. Preparers are provided with valuable insight and best practices through examples from actual SEA reports, which show how performance information can be presented.

If you are interested in serving on a task force to review the proposed revisions, please contact [Louise Kapelewski](#). The new scoring rubric should be complete by **March 15, 2012**.



### COMMENTS

Do you have feedback? Let us know what you like, what you hate, what we can do better! Contact the Newsletter Editor at [radivojevich@co.dane.wi.us](mailto:radivojevich@co.dane.wi.us) or the Chapter President at [carrie.ferguson@legis.wisconsin.gov](mailto:carrie.ferguson@legis.wisconsin.gov)



### ARE YOU MOVING?

If you are moving, or have already moved, please notify both your chapter and AGA National of your address change. You can update your address online at the national website: [www.agacqfm.org/membership/form\\_address.htm](http://www.agacqfm.org/membership/form_address.htm)



### SHARE YOUR NEWS

Do you have some interesting news that your fellow chapter members may be interested in? If so, you are welcome (and encouraged) to submit an article to the [NewsletterEditor@radivojevich@co.dane.wi.us](mailto:NewsletterEditor@radivojevich@co.dane.wi.us). Deadline for submission of articles is the 25th of the month. Feel to send in topic suggestions or features to include.



# Southern Wisconsin Chapter Calendar of Events for 2011-2012

August 23, 2011 – Board Meeting, Hometown Buffet, Madison

September 22, 2011 – Lunch Meeting, Chief Noble Wray, Madison Police Department,  
Topic -- Policing in the New Economy, Restaurant -- Dayton Street Café (inside  
The Concourse, 1 West Dayton)

October 4, 2011 – Board Meeting, Hometown Buffet, Madison

October 20, 2011 – Lunch Meeting, Janice Mueller; Topic – Government Accountability  
Professionals: Where Have We Been and Where Are We Going? Restaurant --  
Talula, 802 Atlas Avenue (off Hwy 51 at Cottage Grove Road)

November 1, 2011 – Board Meeting, Hometown Buffet, Madison

November 17, 2011 – Lunch Meeting, Mark Hanson and Dave Schmiedicke, Property  
Value Assessments and How They are Utilized in the City of Madison Budget,  
Frida Mexican Grill

January 3, 2012 – Board Meeting, Hometown Buffet, Madison

January 26, 2012 – Lunch Meeting, Annual Tax Update, Mardee L. Blattner, CPA, MST,  
Virchow Krause & Company, Imperial Gardens Restaurant

**February 7, 2012 – Board Meeting, Hometown Buffet, Madison, WI**

**February 23, 2012 – Lunch Meeting, Holly Skaife, University of Wisconsin,  
Madison, Capital Market Consequences of the Sarbanes-Oxley Act of 2002,  
Restaurant -- Dayton Street Café (inside The Concourse, 1 West Dayton)**

March 1, 2012 – Cost Allocation Training, WI Department of Revenue Building **\*NEW\***

March 6, 2012 – Board Meeting, Hometown Buffet, Madison

March 22, 2012 – Lunch Meeting, Railroad Grants and their Compliance Issues, Frank  
Huntington, WI DOT, location to be determined

April 3, 2012 – Board Meeting, Hometown Buffet, Madison

April 19, 2012 – Lunch Meeting, Topic and location to be determined

May 1, 2012 – Board Meeting, Hometown Buffet, Madison

May 7, 2012 – MS Walk 2012 (community service event)

**May 10, 2012 – Annual Spring Symposium**

June 5, 2012 – Board Meeting, Hometown Buffet, Madison

June 7, 2012 – Lunch Meeting, Topic and location to be determined

Note: Community service, VITA, and social events will be announced during the year.

# AGA Southern Wisconsin Chapter 2011/2012 Officers and Directors

**President** – Carrie Ferguson, CPA, LAB, [carrie.ferguson@legis.wisconsin.gov](mailto:carrie.ferguson@legis.wisconsin.gov), 608-259-9839

**President Elect** – Vacant

**Immediate Past President** – Sherri Voigt, CGFM, CPA, DNR, [sherri.voigt@wisconsin.gov](mailto:sherri.voigt@wisconsin.gov)

**Chapter Recognition** – Dolly O’Laughlin, [olaughlin@co.dane.wi.us](mailto:olaughlin@co.dane.wi.us), 608-242-6314

**Secretary** – Sherri Voigt, CGFM, CPA, DNR, [sherri.voigt@wisconsin.gov](mailto:sherri.voigt@wisconsin.gov)

**Treasurer** – Roger Birkett, CPA, [jabirk@charter.net](mailto:jabirk@charter.net)

**Historian** – David Mellem, CGFM, CIA, CISA, US DHHS OIG, [david.mellem@oig.hhs.gov](mailto:david.mellem@oig.hhs.gov), 608-264-5415 ext 25

**Membership Chair** – David Mellem, CGFM, CIA, CISA, US DHHS OIG, [david.mellem@oig.hhs.gov](mailto:david.mellem@oig.hhs.gov), 608-264-5415 ext 25

**Newsletter Editor** – Lillian Radivojevich, [radivojevich@co.dane.wi.us](mailto:radivojevich@co.dane.wi.us), 608-284-4801

**Education Chair** – Mary Laufenberg, CGFM, CPA, DOR, [mary.laufenberg@revenue.wi.gov](mailto:mary.laufenberg@revenue.wi.gov), 608-266-1670

**Webmaster** – Scott Thornton, [scott@goochpages.com](mailto:scott@goochpages.com)

**Community Service Chair** – Michele Tessner, CPA, DPI, [michele.tessner@dpi.wi.gov](mailto:michele.tessner@dpi.wi.gov)

**CGFM Co-Chairs** –

Michelle “Bea” Beasley, [michelle.beasley@wisconsin.gov](mailto:michelle.beasley@wisconsin.gov)

Michele Tessner, CPA, DPI, [michele.tessner@dpi.wi.gov](mailto:michele.tessner@dpi.wi.gov)

**Directors** -

Eric Busse, DPI [eric.busse@dpi.state.wi.us](mailto:eric.busse@dpi.state.wi.us), 608-267-9199

Julie Gordon, CPA, UW System, [jgordon@uwsa.edu](mailto:jgordon@uwsa.edu), 608-263-4395

Thomas A. Scheidegger, CPA, [thomas.scheidegger@bakertilly.com](mailto:thomas.scheidegger@bakertilly.com)

**Chapter Website** – [www.aga-wis.org](http://www.aga-wis.org)

**Chapter Address** – PO Box 1454; Madison, WI 53701-1454



SOUTHERN WISCONSIN CHAPTER