







Airport Activity

- ▶ Passengers generate
 - Airline travel
 - Concession purchases
 - Parking

* Measured by enplanements
- ▶ Aircraft generate
 - Landing fees
 - Ramp fees
 - Hangar rentals
 - Fuel Sales

* Measured by operations



7

Airport Finances

- ▶ Operational Costs + Debt Service
- ▶ Capital Projects
 - Airfield
 - Terminal
 - Parking
- ▶ Airline Rates & Charges
 - Landing Fees, terminal rent
- ▶ On-airport, Non-aeronautical Revenue
 - Concessions, rental car fees
- ▶ "Non-traditional" non-aeronautical revenue
 - Business parks, hotels, other services



8

Airport Improvement Program (AIP)

- ▶ Basic Grant Requirements
 - State/local government owning airports
 - Private owners with more than 2,500 enplanements
 - State/local governments – for planning and noise mitigation
- ▶ Eligible programs
 - Safety and Standards
 - Airfield/Airport Security
 - Airport Planning
 - Airport Development
 - Environmental Mitigation
 - Public Use Facilities
 - Instrument Landing Systems/Runway Lighting



9

Airport Improvement Program (AIP) - 2

- ▶ AIP Allocations
 - Statute-driven
 - Entitlement
 - Approximately 2/3 of AIP
 - Discretionary
 - Approximately 1/3 of AIP
 - 40% is for specific set asides
 - Noise
 - Reliever
 - Military Airport Program
 - 60% is for all other discretionary projects



10

Passenger Facility Charge (PFC)

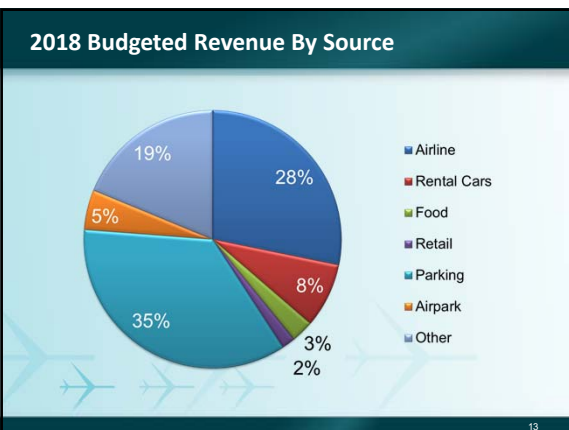
- ▶ Federally-regulated, locally-managed
- ▶ Charge collected by air carriers, from \$1 to \$4.50
 - Most airports charge \$3 or \$4.50
- ▶ A passenger can be charged a maximum of two PFCs on one-way and four on a roundtrip itinerary
- ▶ Participation is limited to public agencies that own and control a commercial service airport
- ▶ PFCs may be used for local share of AIP projects
- ▶ Can pay debt service and PFC administrative costs

11

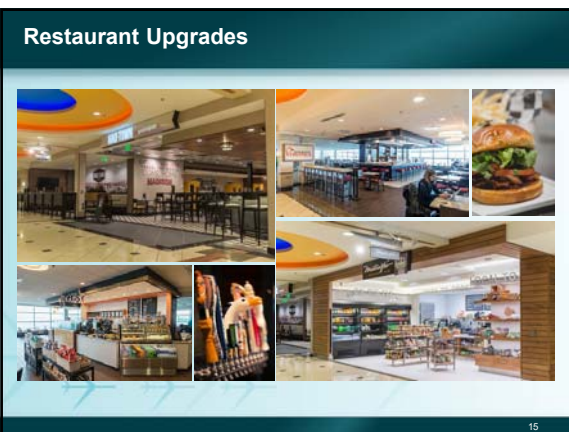
MSN Airport Funding Sources

- ▶ No local property tax
- ▶ FAA airport improvement program (AIP)
 - Entitlement
 - Discretionary
- ▶ State of Wisconsin
 - GA fuel tax
 - Aircraft registration fees
 - Ad valorem property tax (airlines)
- ▶ Passenger facility charge (PFC)
- ▶ Airport rates & charges
- ▶ Parking
- ▶ Building & ground leases
- ▶ GO Bonds

12



- ### Current & Recent CIP Projects
- South Ramp Deicing Pad - \$5M
 - Low Visibility Project - \$12M
 - Parking Ramp Expansion - \$30M
 - Airport Maintenance Facility - \$15M
 - 14/32 Runway Safety Area - \$28M
 - Glycol Treatment System - \$4M
 - Taxiway B Addition - \$4M
 - Taxiway A Reconstruction - \$11M
 - Taxiway M Construction - \$20M
 - Taxiway J Construction - \$2M
 - Terminal Modernization 2018 - \$25 - \$50M



Gift Shop Upgrades



16

Questions?



17
